

CENTRO LOGISTICO DE CUENCA

📍 PANAMERICANA NORTE

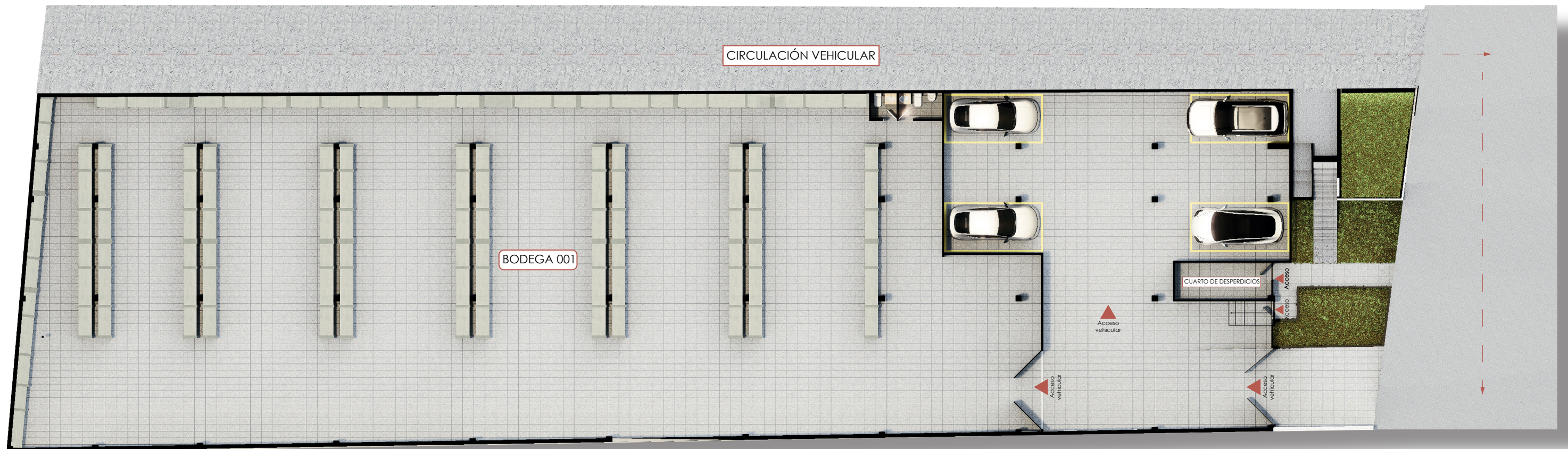


EMPLAZAMIENTO



SUBSUELO

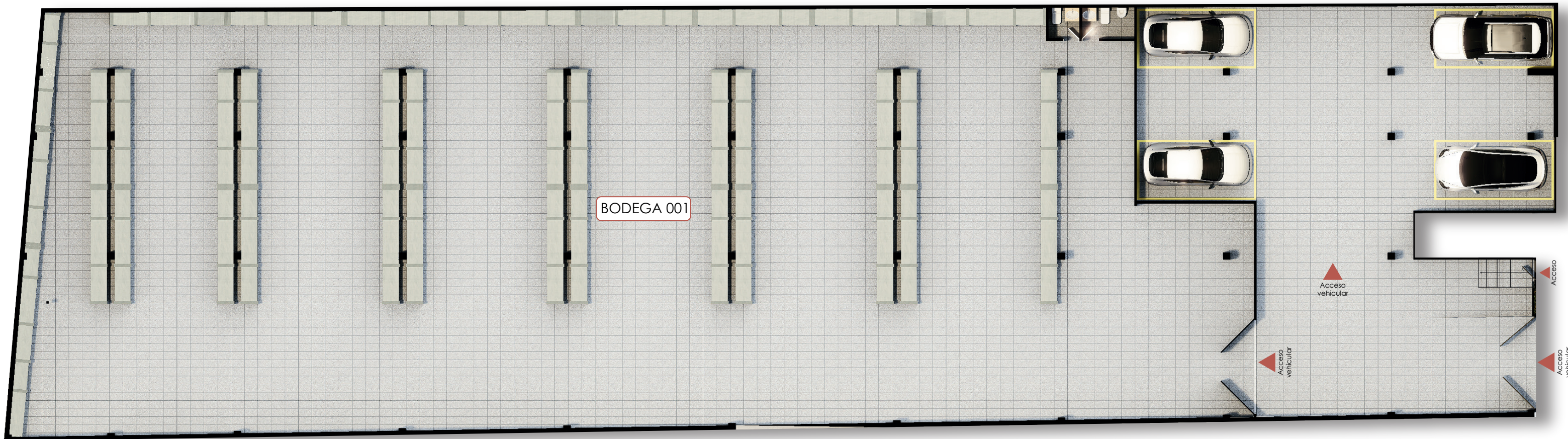
- Bodega 001



BODEGA 001 / 1.120 m²

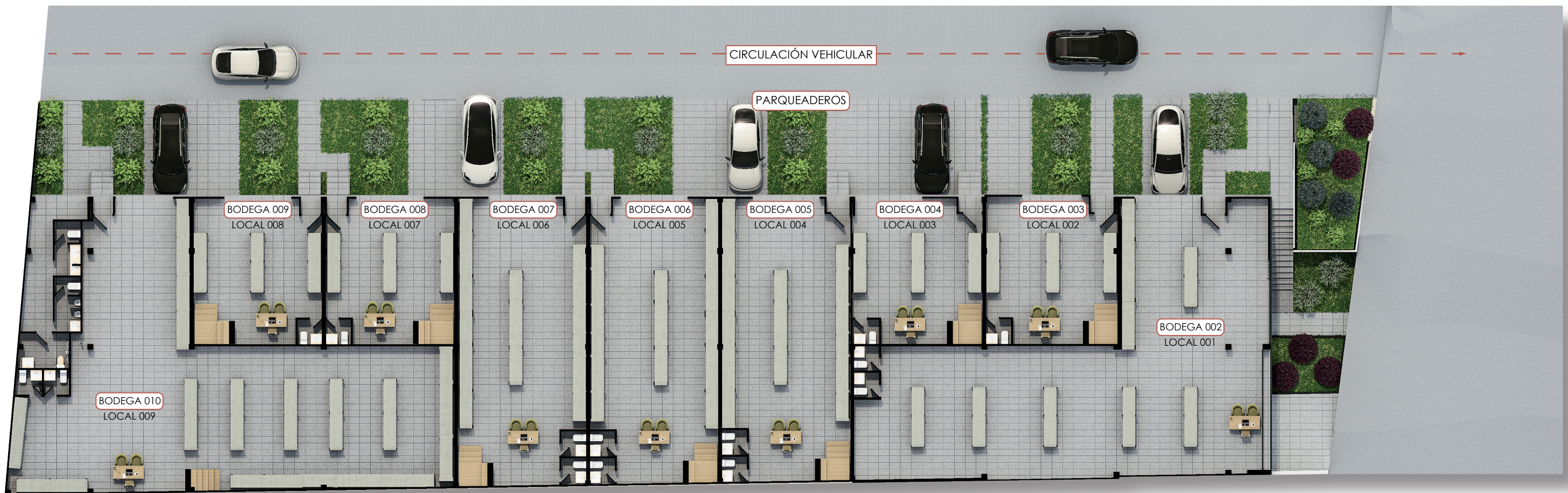
Área Interna: 880,26 m² / Parquadero : 239,74 m²

- 2 Baños



PLANTA BAJA

- Bodega 002 / Local 001
- Bodega 003 / Local 002
- Bodega 004 / Local 003
- Bodega 005 / Local 004
- Bodega 006 / Local 005
- Bodega 007 / Local 006
- Bodega 008 / Local 007
- Bodega 009 / Local 008
- Bodega 010 / Local 009



BODEGA 002 / LOCAL 001 / 213,02 m²

Área Interna: 213,02 m²

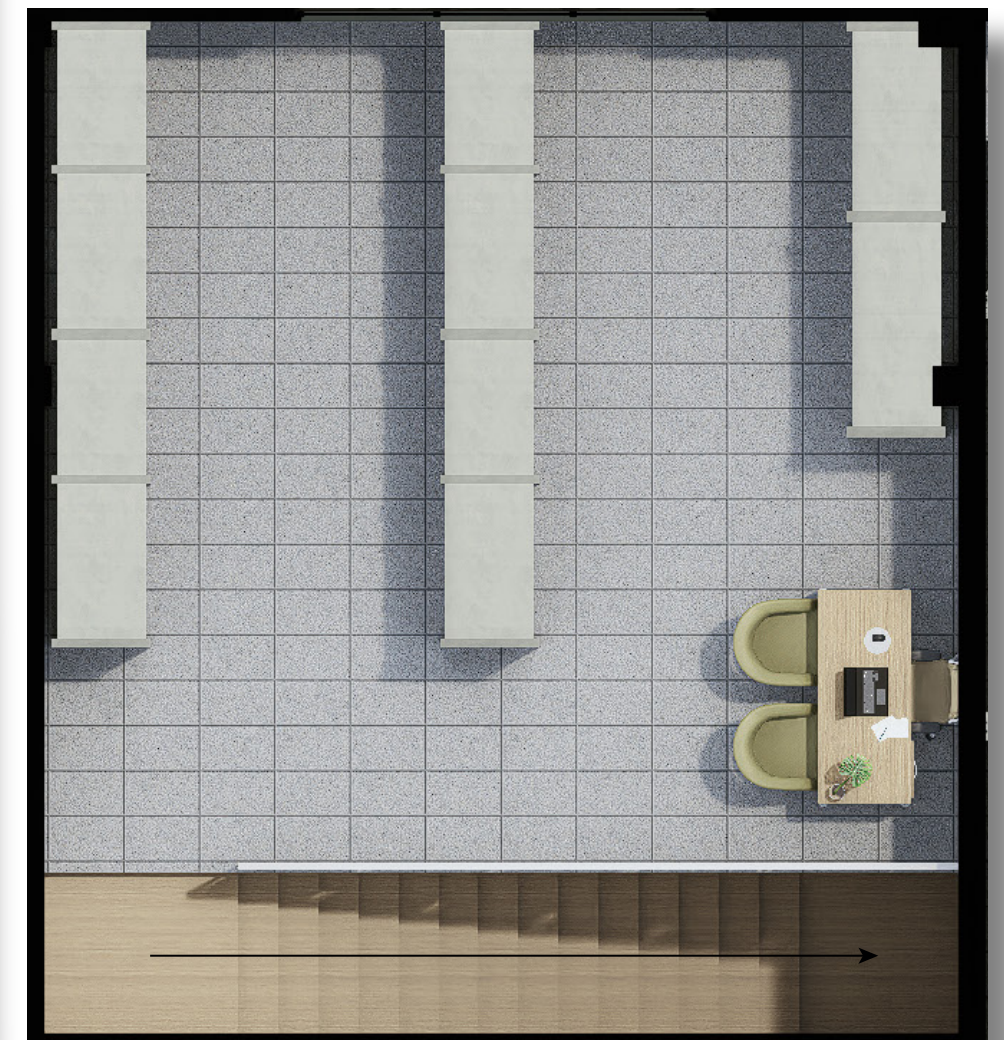
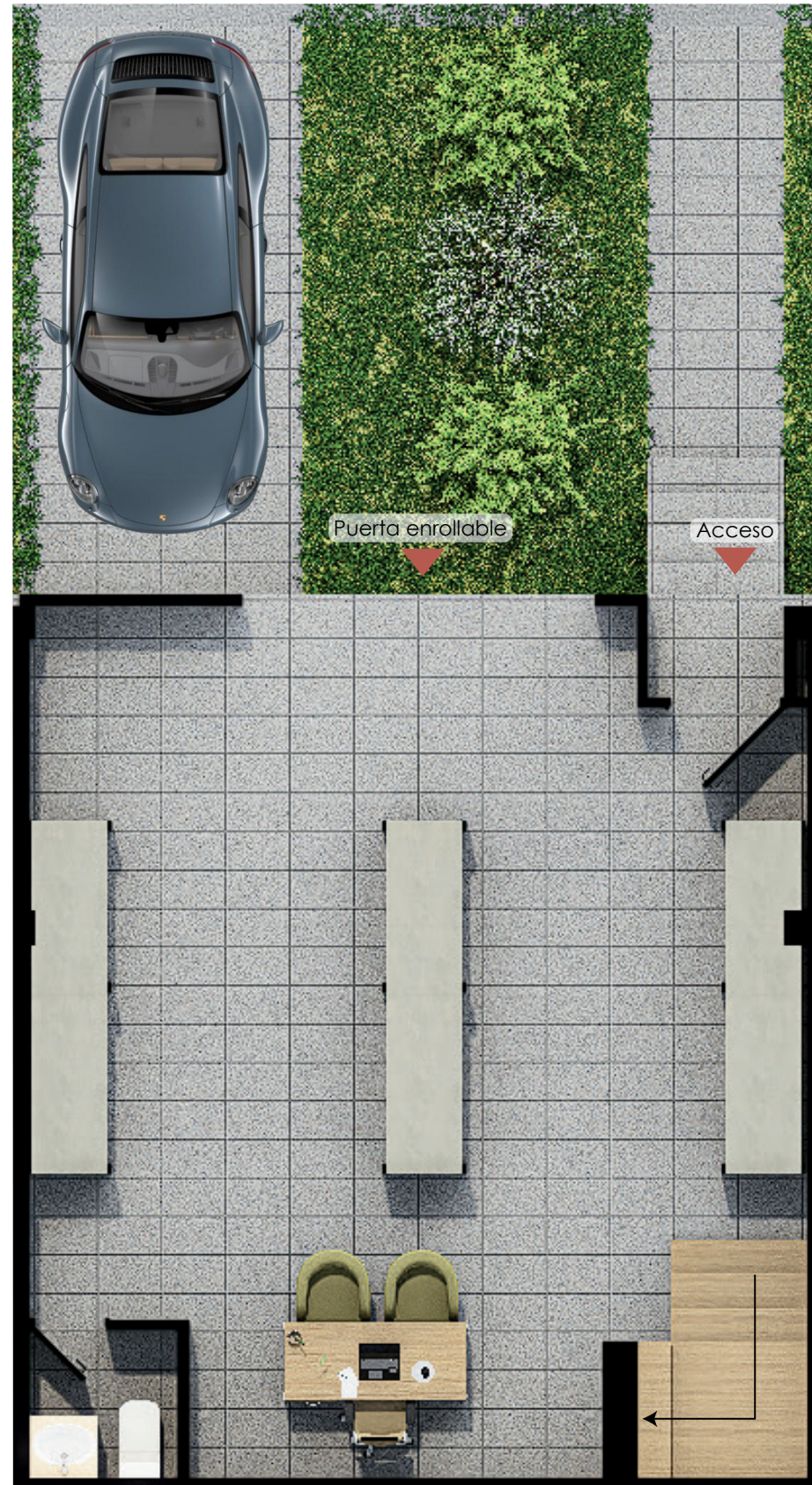
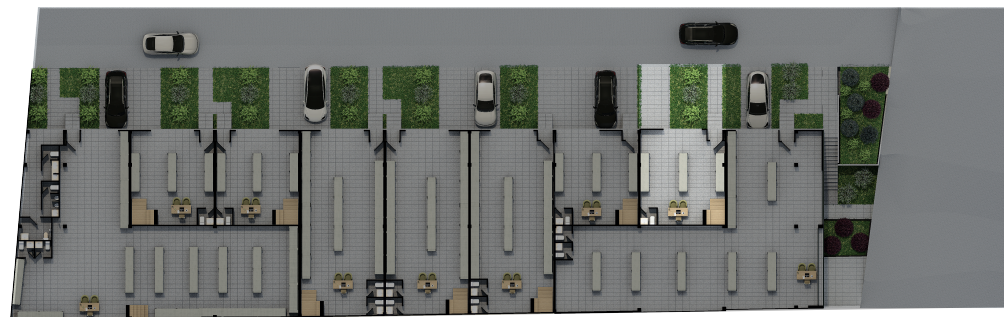
- 2 Baños
- Parqueadero



BODEGA 003 / LOCAL 002 / 99,99 m²

Área Interna: 54,86 m² / Mezzanine : 45,13 m²

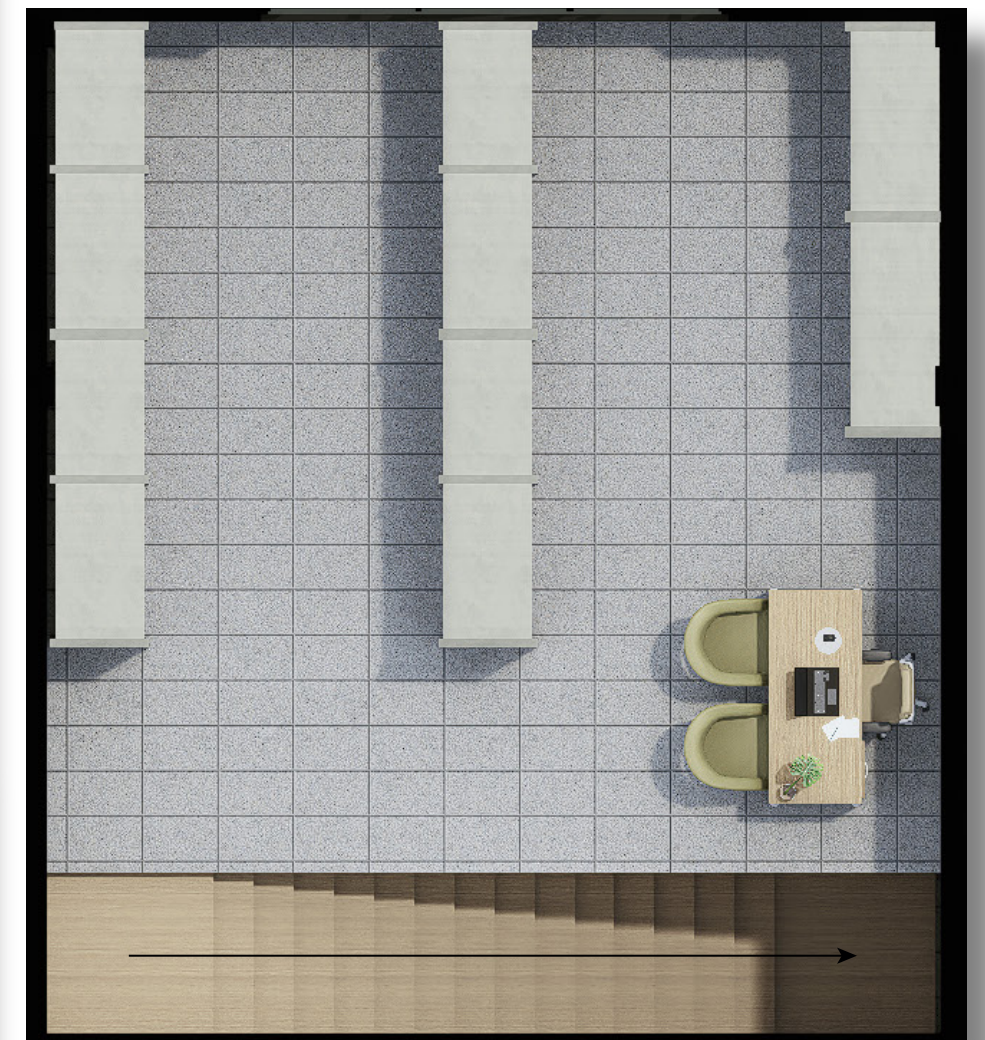
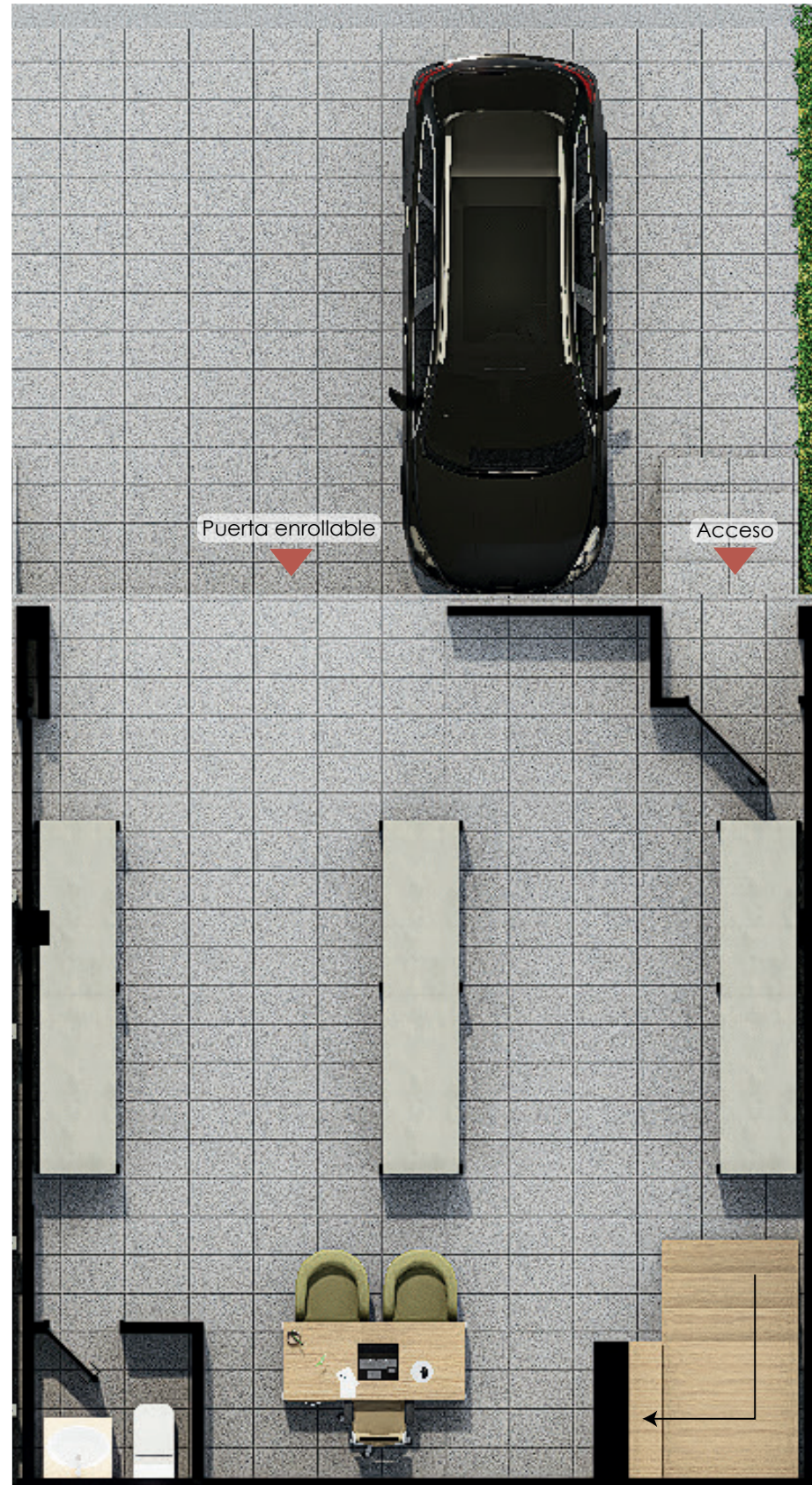
- 1 Baño
- Parqueadero



BODEGA 004 / LOCAL 003 / 107,64 m²

Área Interna: 53,85 m² / Mezzanine : 53,69 m²

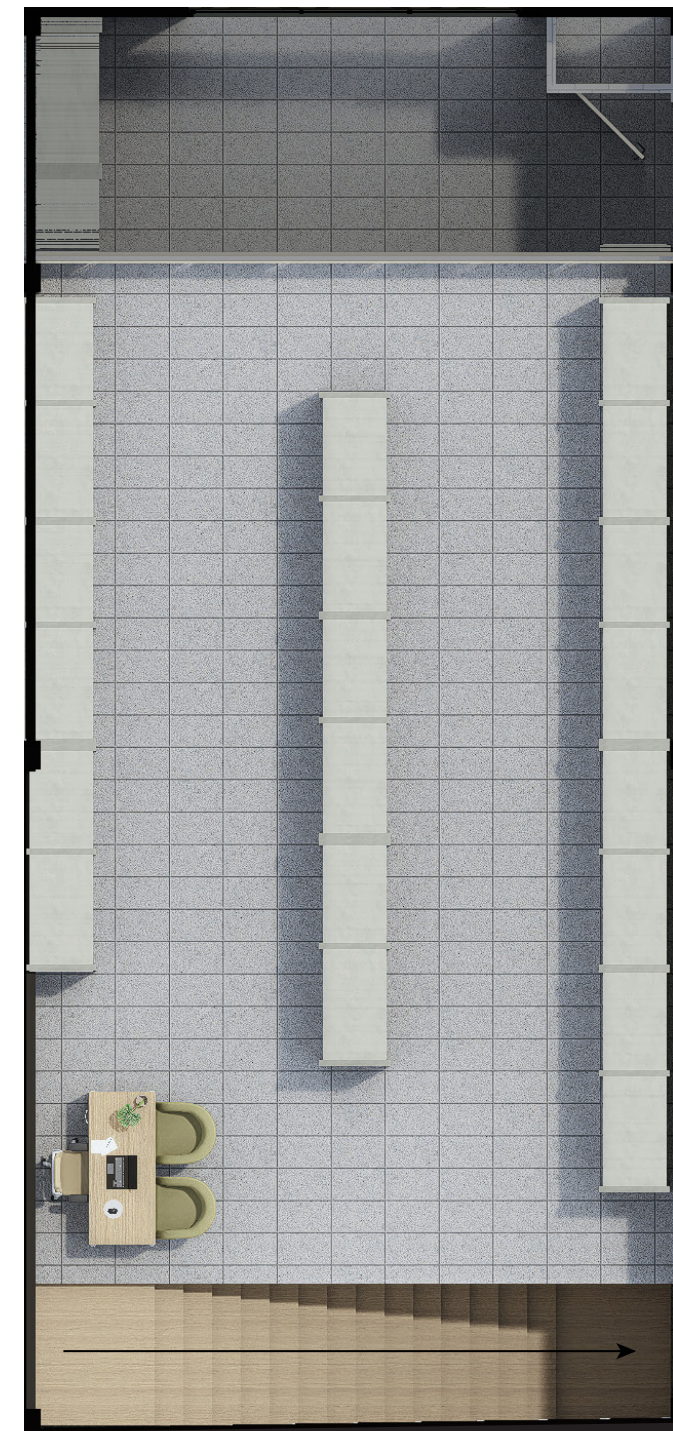
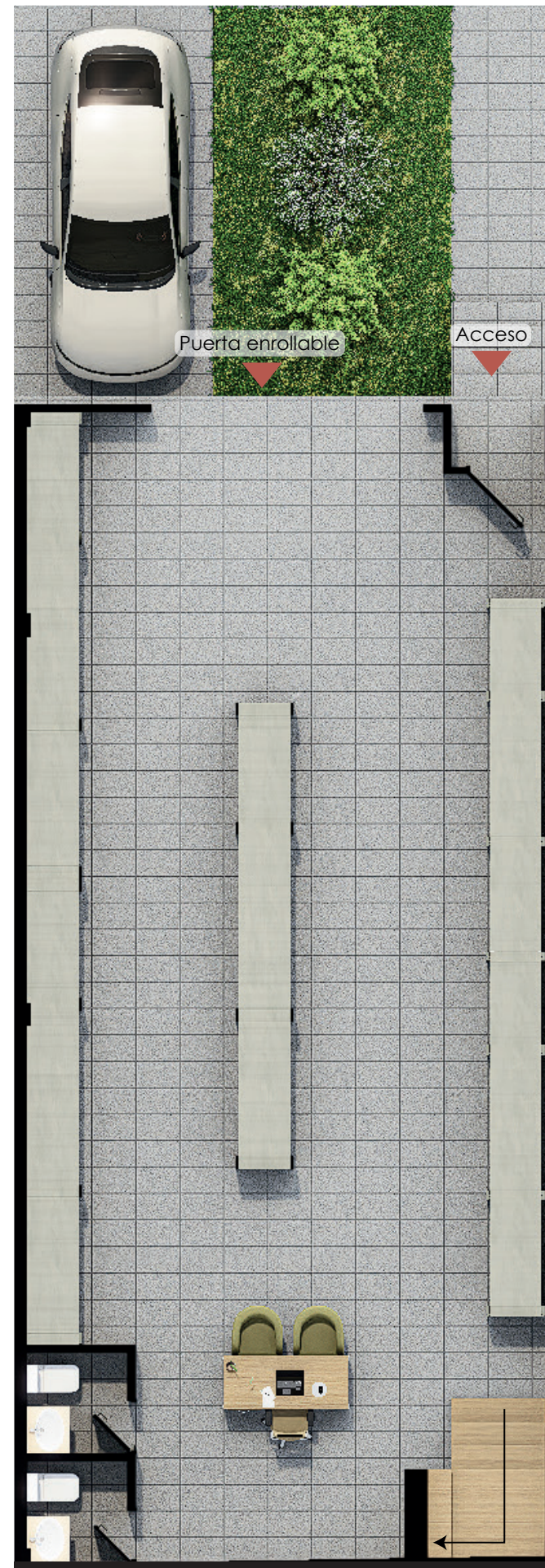
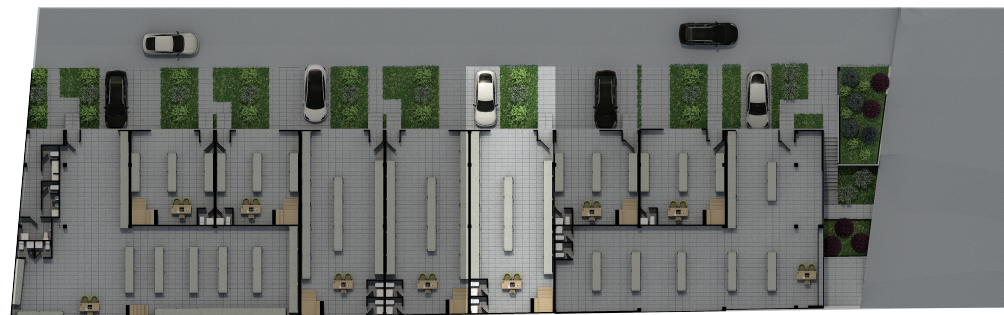
- 1 Baño
- Parqueadero



BODEGA 005 / LOCAL 004 / 187,63 m²

Área Interna: 102,97 m² / Mezzanine : 84,66 m²

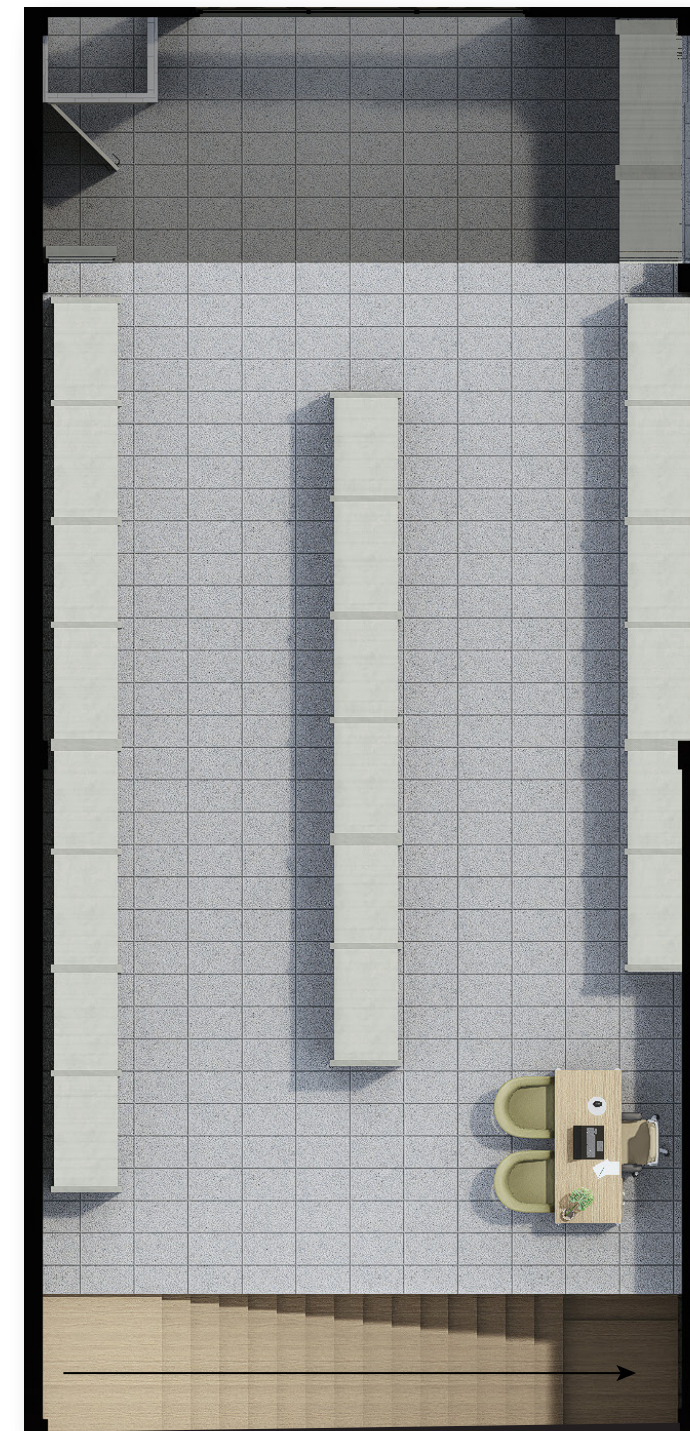
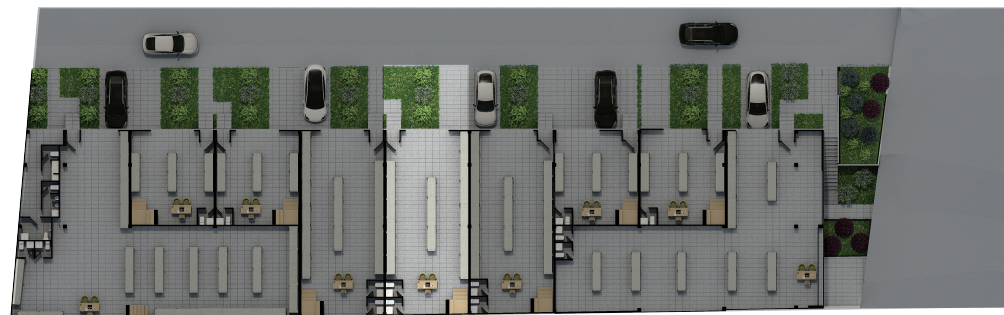
- 2 Baños
- Parqueadero



BODEGA 006 / LOCAL 004 / 187,21 m²

Área Interna: 103,75 m² / Mezzanine : 83,46 m²

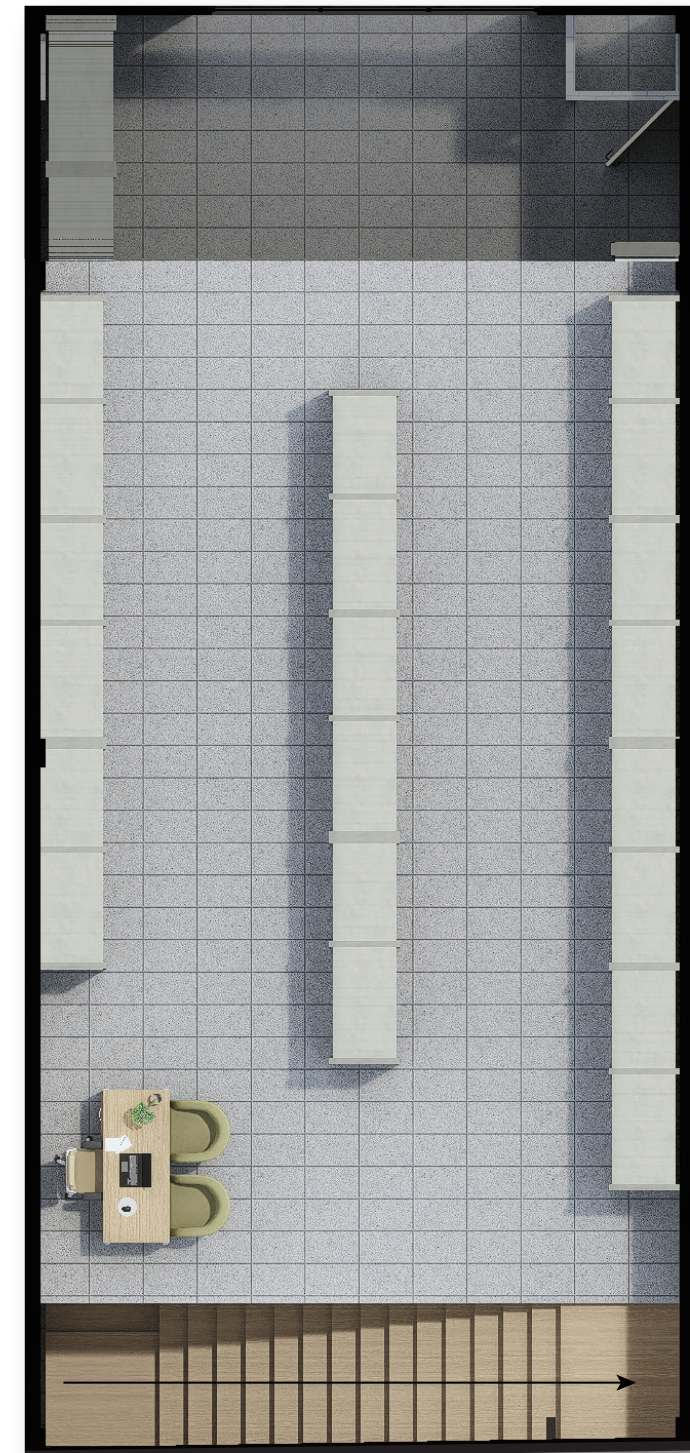
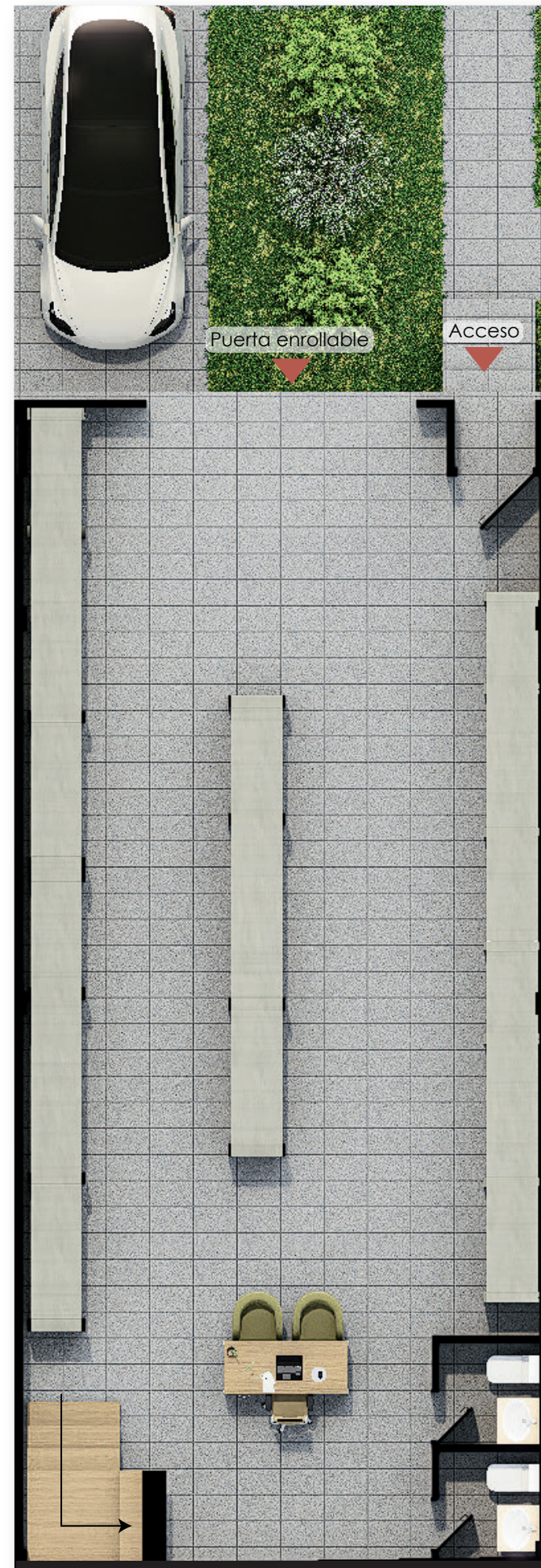
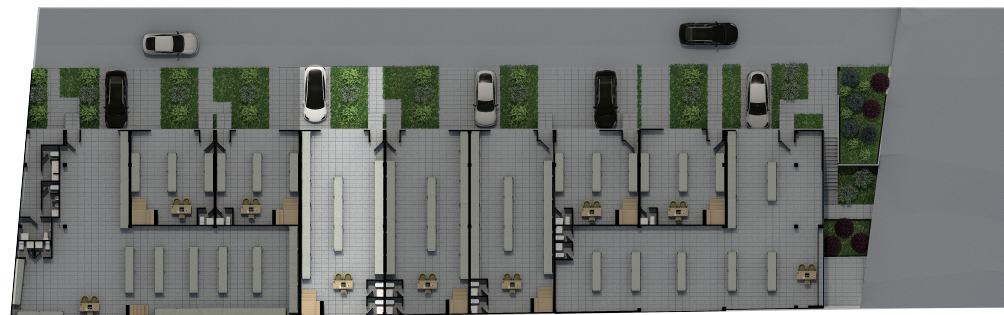
- 2 Baños
- Parqueadero



BODEGA 007 / LOCAL 006 / 190,56 m²

Área Interna: 104,53 m² / Mezzanine : 86,03 m²

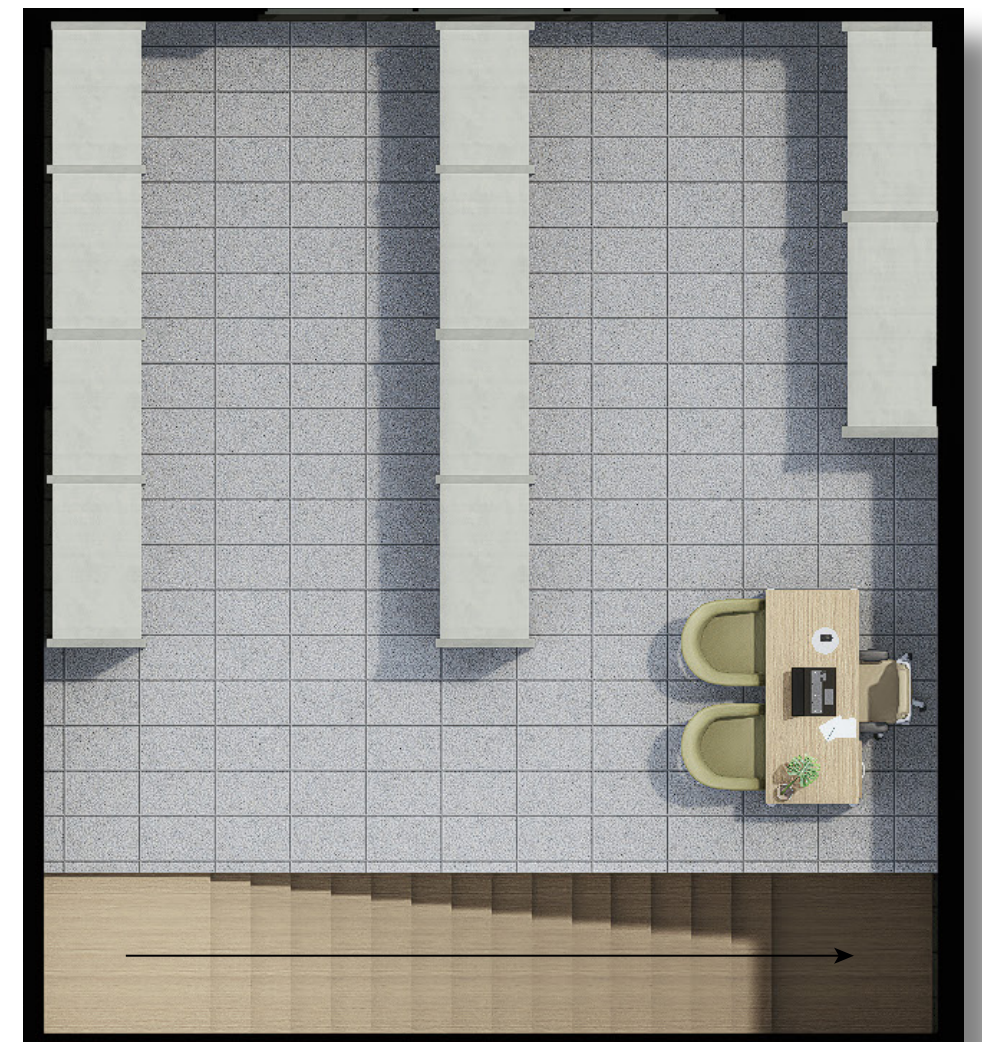
- 2 Baños
- Parqueadero



BODEGA 008 / LOCAL 007 / 107,36 m²

Área Interna: 53,67 m² / Mezzanine : 53,69 m²

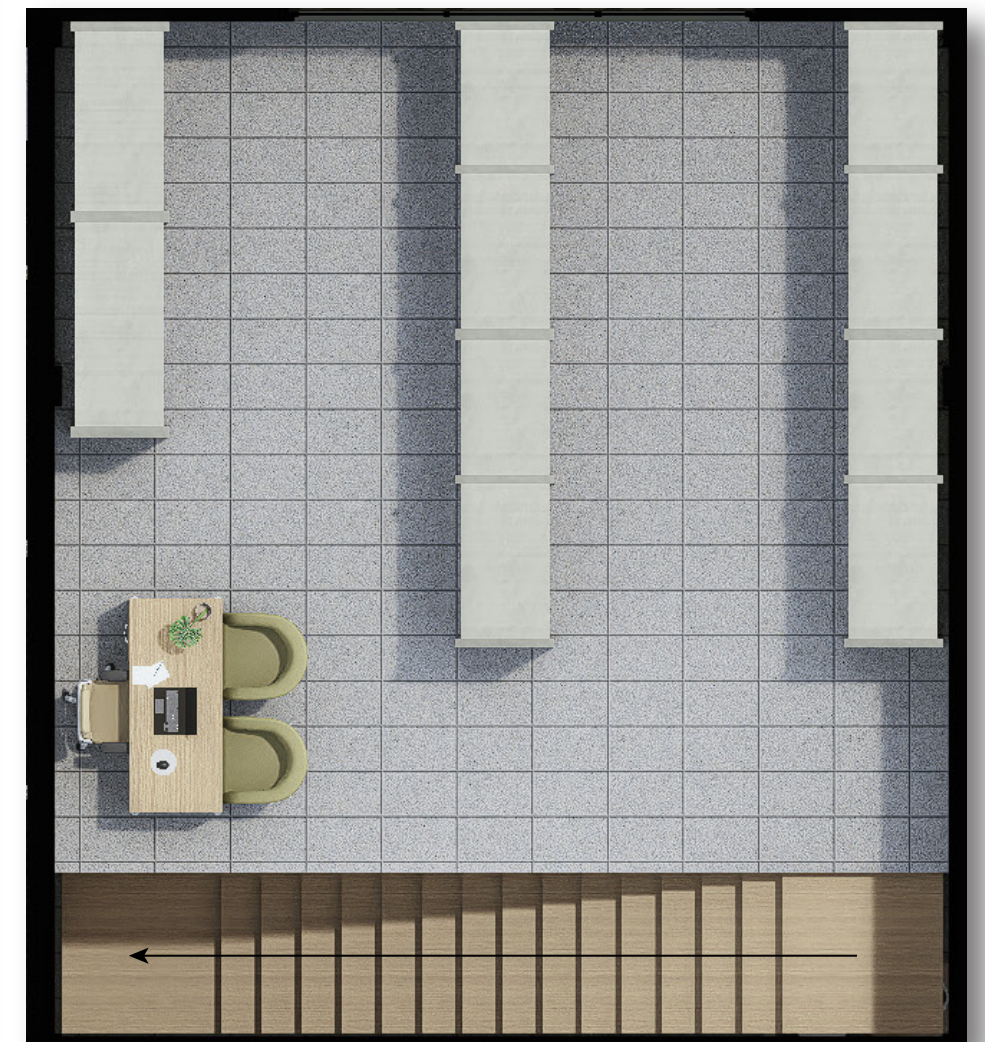
- 1 Baño
- Parqueadero



BODEGA 009 / LOCAL 008 / 107,36 m²

Área Interna: 53,67 m² / Mezzanine : 53,69 m²

- 1 Baño
- Parqueadero



BODEGA 010 / LOCAL 009 / 281,36 m²

Área Interna: 219,57 m² / Mezzanine : 61,79 m²

- 2 Baños

